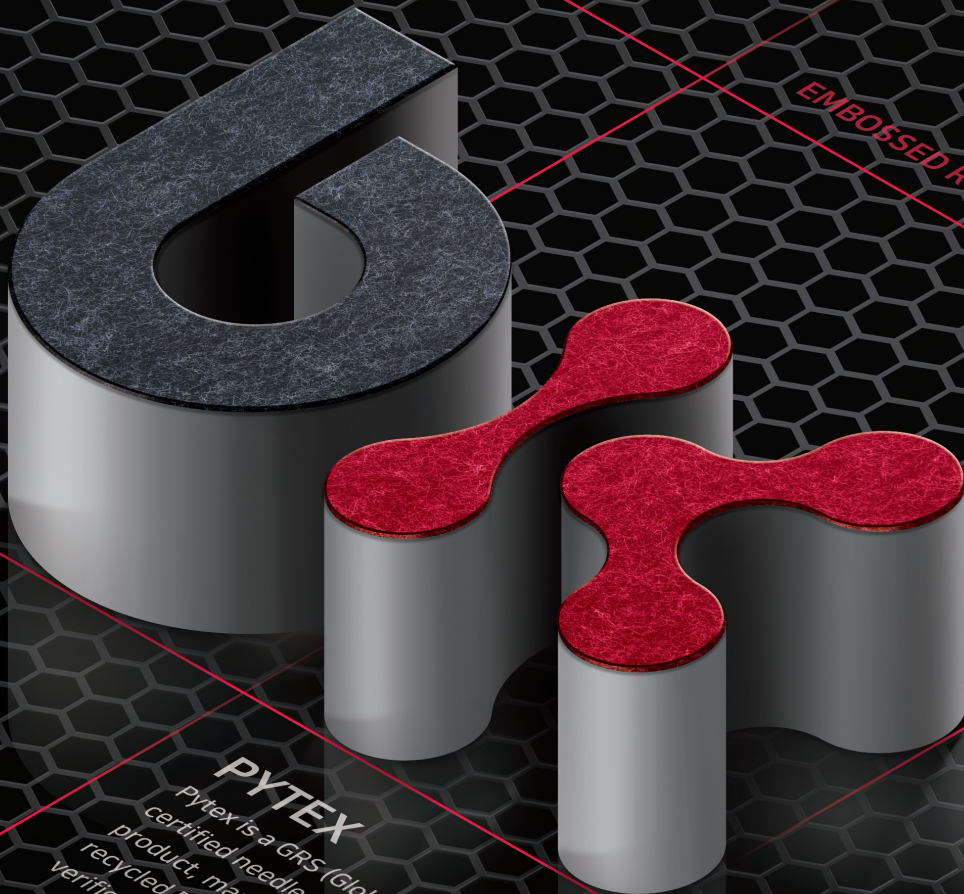


Engineered Nonwovens. Made Right.



EMBOSSED ROLL MAT

GEOTEXTILES

PYTEX

Pytex is a GRS (Global Recycled Standard) certified needle-punched nonwoven flooring product, manufactured with GRS-certified recycled PET polyester and independently verified through the entire supply chain.

WATERPROOF
COMPOSITE SHEET





Engineered Nonwovens.
Made Right.

Quality Nonwovens Engineered in Korea

Contents



**Manufacturing
Process**

Products

Pytex
Embossed Roll Mat
Waterproof Composite Sheet
Nonwoven Geotextiles
Weed Control Sheet
Cushion Sheet

**Certifications &
Patents**

**Application
Gallery**



04

06

13

14

Why Bokwang?

40+Years of Expertise



Established in 1983. Over four decades of specialization in nonwoven manufacturing.

Vertically Integrated Manufacturing



From raw material input to finished product, complete in-house production control.

Custom Solutions



Flexible customization of color, weight (GSM), dimensions, and functional properties.

Certified Quality



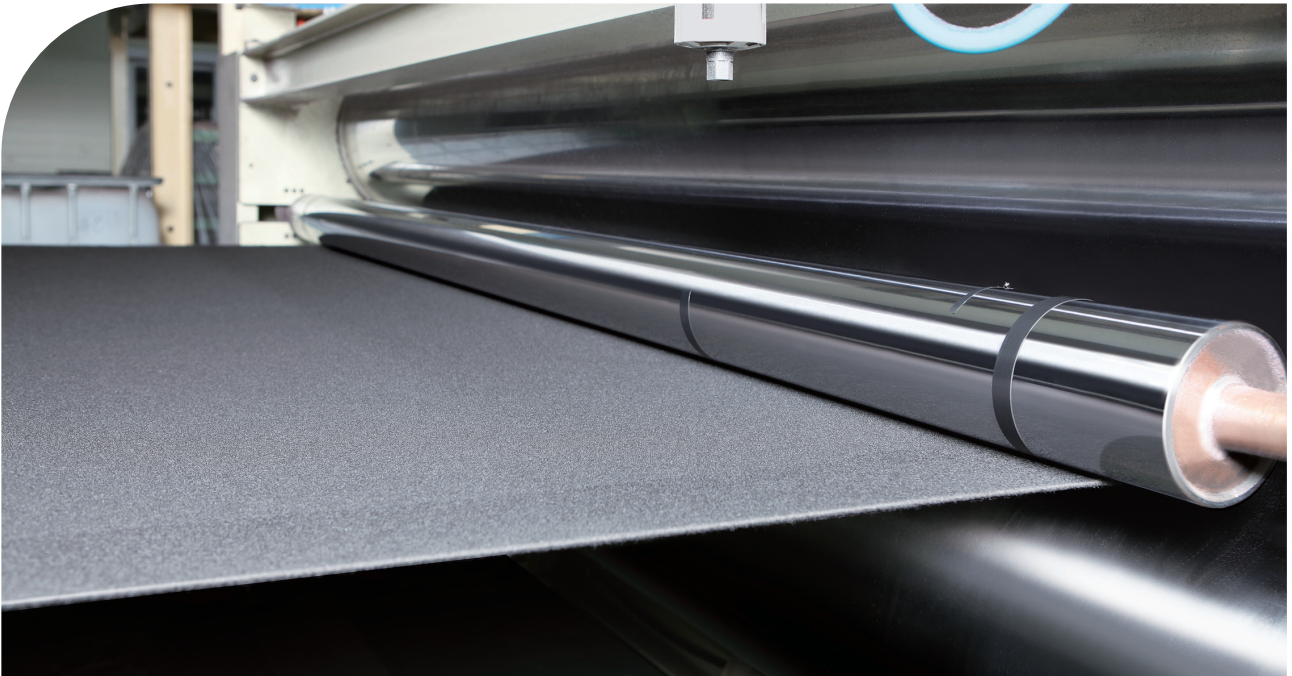
ISO 9001 / 14001 / 45001, GRS certified product, KS standards, government-recognized R&D center.

Global Ready

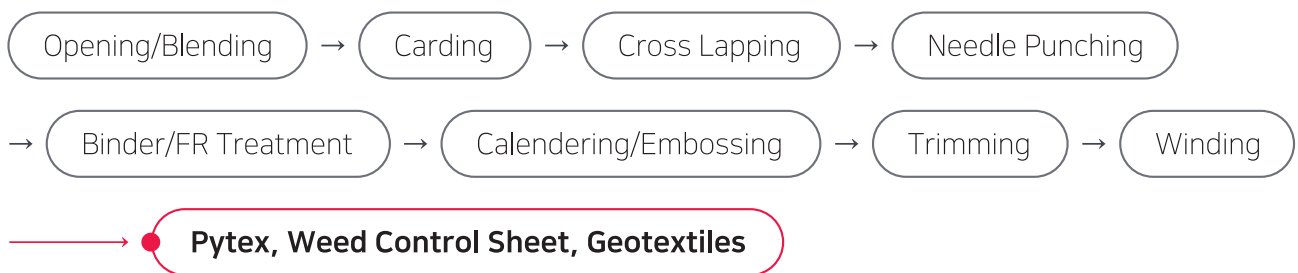


Export experience, english communication support, reliable lead times.

Our Manufacturing Process

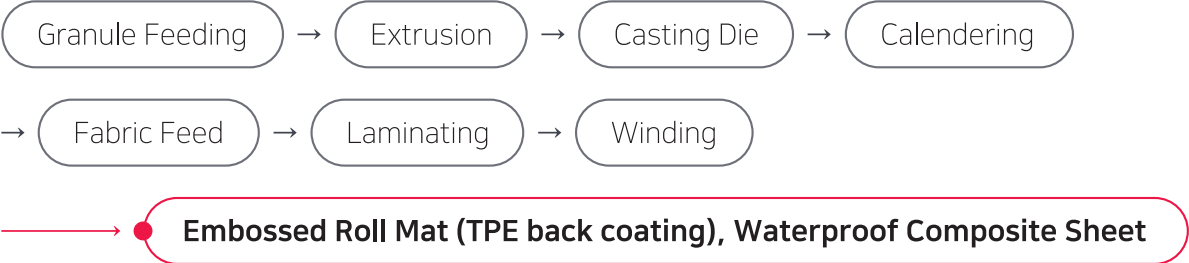


Needle Punching Process



※ Heat-transfer printing capability for custom patterns and designs on nonwoven substrates-
available for inquiry.

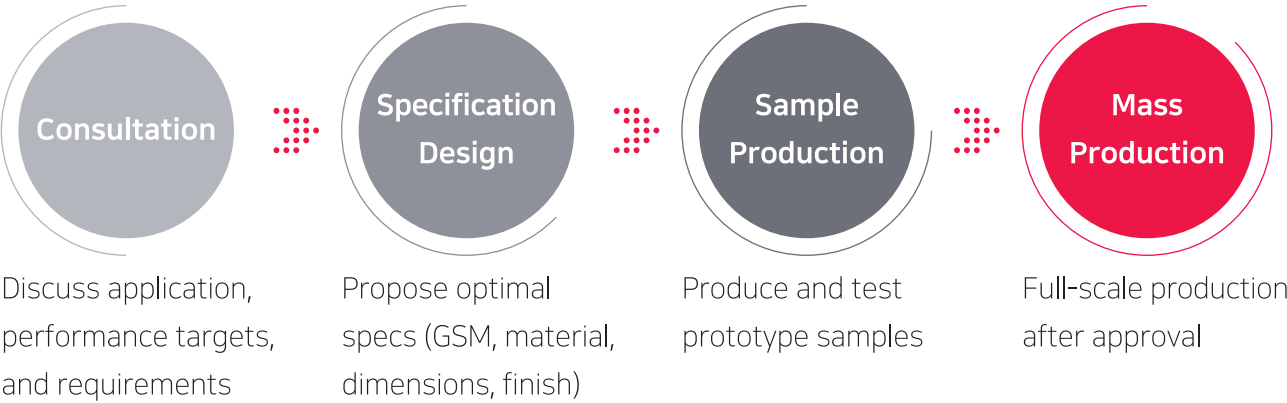
Extrusion Laminating Process



Thermal Roll Lamination Process



Custom Development Process



Pytex, Premium Nonwoven Flooring



Pytex is a GRS (Global Recycled Standard) certified needle-punched nonwoven flooring product. The base nonwoven fabric is made from 100% recycled post-consumer polyester, with compliance independently verified throughout the entire supply chain. Designed for floor protection and decorative finishing, it is ideal for exhibition halls, event venues, convention centers, and commercial spaces. Available in plain, embossed, and fire-retardant types.



**GRS Certified
Product**



**Superior Abrasion
Resistance**



**Dimensional
Stability**



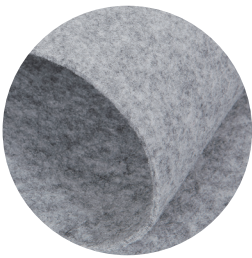
**Recycled
PET Material**



Reusable

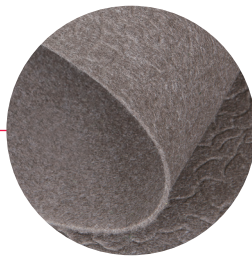


- **Material** GRS-certified Recycled PET Polyester
- **Width × Length** 1.8 m × 36 m / 2.0 m × 36 m
- **Fire Retardancy** Pass (KFI certified)
- **Form** Needle-punched nonwoven, roll type



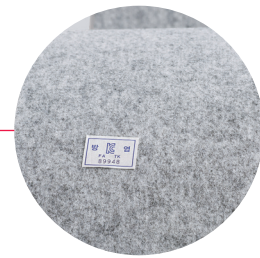
Plain

Standard smooth-surface nonwoven flooring



Embossed

Textured surface with embossed floral pattern



Fire-Retardant

Flame-retardant treated, KFI certified

Application of our Pytex

Exhibition halls, trade fairs, event venues, convention centers, furniture showrooms, building corridors, temporary walkways

17 Color Options



- Color card available upon request.
- Custom specifications available (min. 5,000 m²).

Embossed Roll Mat, Non-Slip Flooring Solution



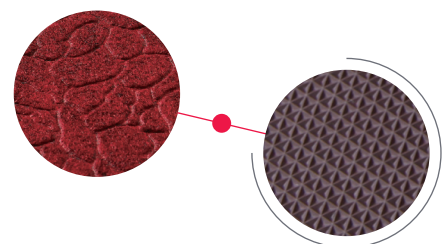
The Embossed Roll Mat combines embossed nonwoven surface with TPE back coating, providing enhanced slip resistance and durability for building entrances, corridors, and commercial floors.



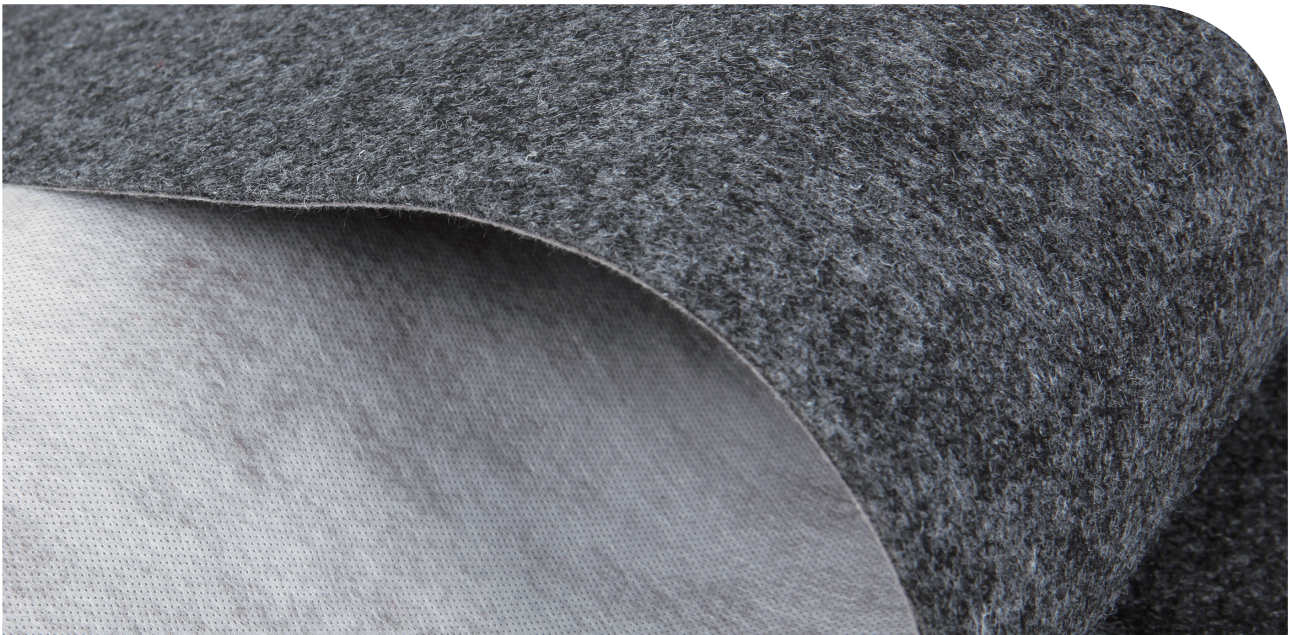
- **Surface** Recycled Polyester nonwoven (embossed pattern)
- **Base** TPE coating
- **Width × Length** 1.2 m × 10 m / Custom : max. width 1.8 m
- **Colors** Basic : red, wine, gray, dark gray / Custom : available in pytex 17 colors

Application of our Embossed Roll Mat

Building entrances, corridors, verandas, kitchens,
industrial floors, event venues, commercial interiors



Waterproof Composite Sheet



Triple-layer composite combining nonwoven fabric (manufactured in-house) with a TPE-based waterproof layer. Used for rooftop waterproofing, building structure protection, and outdoor exposed applications.



- **Structure** Top : protective nonwoven / Middle : TPE waterproof layer / Bottom : cushioning nonwoven
- **Width × Length** 1.0 m × 25 m (roll supply)
- **Customization** Weight and thickness selectable

Application of our Waterproof Composite Sheet

Rooftop waterproofing, building structure protection, outdoor waterproof applications

Nonwoven **Geotextiles**

Needle-punched nonwoven material for soil reinforcement, separation, filtration, and protection in civil engineering and construction projects. KS certified.

- **Structure** Needle-punched nonwoven
- **Dimensions** Weight, width customizable within equipment capacity (roll supply)
- **Certification** KS (Korean Standards) certified

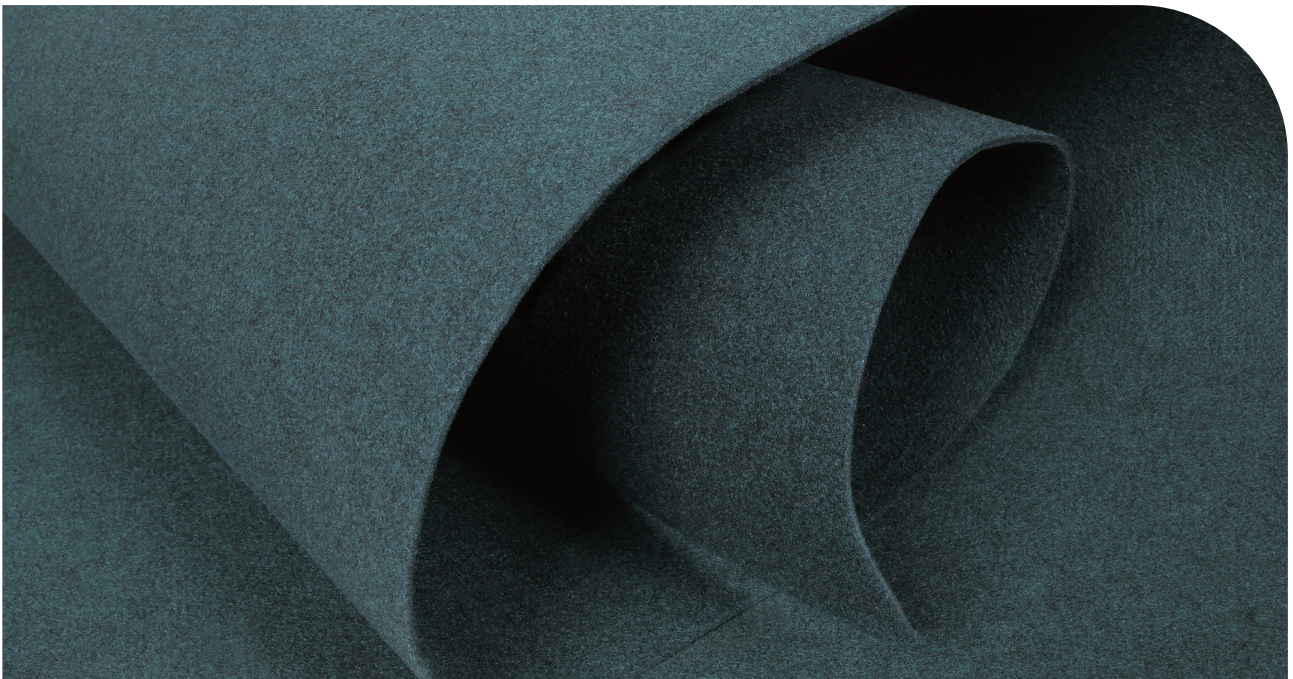


Application of our Nonwoven Geotextiles

Roads and railways, drainage, soft ground reinforcement, embankments and slope protection

Weed Control Sheet

High-density needle-punched nonwoven sheet for weed suppression while maintaining water permeability. UV-resistant for long-term outdoor durability.



- **Structure** High-density needle-punched nonwoven (Recycled Polyester)
- **Dimensions** Weight and width selectable (roll supply)
- **Key Properties** Weed suppression, water permeability, UV resistance, fire retardant
- **Color** Basic : dark green / Custom : available in pytex 17 colors

Application of our Weed Control Sheet

Solar power plants, transmission towers, substations, landscaping, civil engineering sites

Cushion Sheet

Laminated composite of nonwoven fabric, LDPE film, and kraft paper.
Thermal roll lamination process provides impact absorption for packaging and protection of electronic and industrial products.

- **Structure** Nonwoven + LDPE film + Kraft paper (thermal roll lamination)
- **Dimensions** Weight and width selectable (roll supply)
- **Key Properties** Impact cushioning, easy cutting and fabrication
- **Colors** Natural, black

Application of our Cushion Sheet

Electronic product packaging, industrial component protection, logistics and transportation packaging



Certified Quality & Innovation




Global Certifications

| ISO 9001 | ISO 14001 | ISO 45001 | GRS | KS |
|---|---|---|--|---|
| Quality Management | Environmental Management | Occupational Health & Safety | Global Recycled Standard | Korean Standards |
|  |  |  |  |  |

Korean Government-backed Certifications

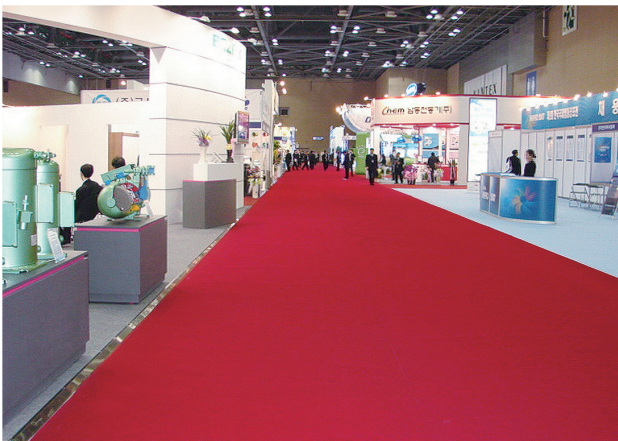
| Inno-Biz | Main-Biz | Venture Business | KEIT | KOITA |
|---|---|---|--|---|
| Technology Innovation SME | Management Innovation SME | Organization for Venture Enterprise Certification | Specialized Company in Materials, Parts & Equipment | Government-recognized Company R&D Center |
|  |  |  |  |  |

Patents & Designs

| Patent | Design | Design |
|---|---|---|
| No. 10-2502397 LDPE Nonwoven Cushion Sheet Manufacturing Device | No. 30-1290026 Roller for Nonwoven Fabric Forming | No. 30-0881425 Nonwoven Fabric (Surface Pattern) |
|  |  |  |

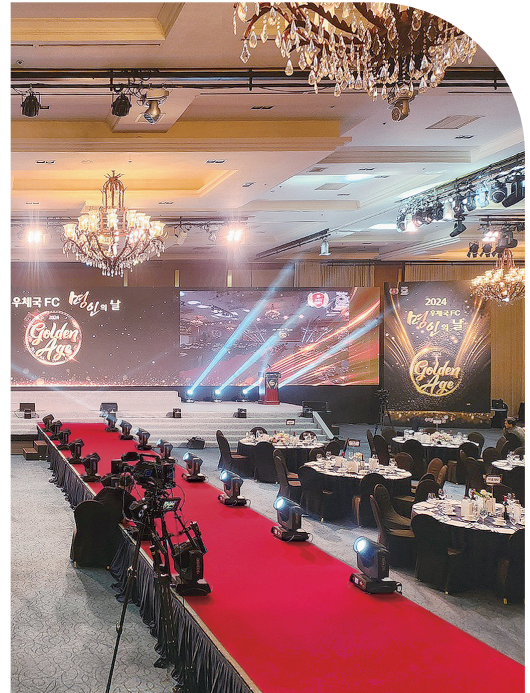
Our Products in Action

Exhibition Flooring_Pytex





Convention Centers / Event Venues_Pytex



Building Entrances / Corridors_Embossed Roll Mat



Let's build something together.



**BOKWANG
INDUSTRY CO., LTD.**

Add. 191, Gunwigongdan-gil, Gunwi-eup,
Gunwi-gun, Daegu, 43123, Republic of Korea
Tel. +82-54-383-6090 Fax. +82-54-383-6089
Email. contact@bokwang21.net
Website. www.bknonwoven.com

※ Images, specifications, and appearance may change without notice for performance improvements or other reasons.
※ The printed colors in this catalogue may differ slightly from the actual product colors.
※ Produced April 2026